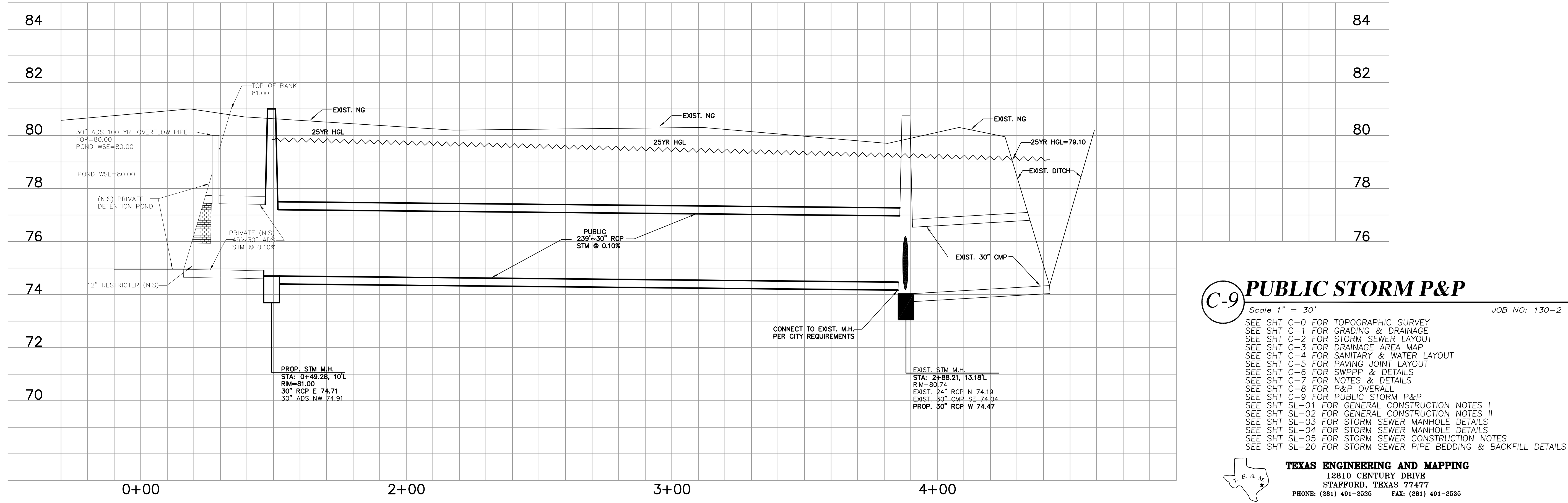


STORM CALCULATION TABLE

Inlet Area #	To	No.	Area (Acres)	C	C x A	Q (cfs)	Time (min)	Reach (ft)	Diameter (in)	Hydraulic Radius (ft)	Slope (ft/ft)	Manning's n	Capacity (cfs)	Velocity (ft/s)	Fall (ft)	Dmg	Flowline Elevation		Flowline Elevation		Flowline Elevation		Elevation of These		Threat Area	W.G. Elevation	Top Rim Elevation	Cover	Cover	Ponding	Ponding							
																	Upstream	Downstream	Upstream	Downstream	Upstream	Downstream	Upstream	Downstream								Upstream	Downstream	Upstream	Downstream	Upstream	Downstream	
1	2	1	3.45	0.70	2.415	7.570	18.20	18.57	0.2514	45	30	4.9387	0.625	0.10	12.911	2.642	0.045	0.00	74.95	77.45	74.91	77.41	3.724	0.1930	0.0896	0.1077	80.05	79.96	NA	NA	80.00	81.00	2.55	3.60	0.05	-1.14		
2	3	2	0.00	0.80	0.00	2.760	7.536	20.80	18.75	0.4601	259	30	4.9387	0.625	0.10	0.011	15.229	3.123	0.229	0.20	74.71	77.21	74.47	76.97	4.237	0.2576	0.0197	0.1284	79.96	79.10	NA	NA	81.00	80.74	3.80	3.77	-1.14	-1.84

BENCHMARK:
SUGAR LAND FLOODPLAIN RM NO. SGR-RM016: A 3" BRASS DISK STAMPED "RM016" LOCATED AT THE INTERSECTION OF HIGHWAY 90A AT GILLINGHAM LANE, FROM SAID INTERSECTION TRAVEL NORTH ON GILLINGHAM LANE 184 FEET TO THE BENCHMARK LOCATED ON THE LEFT.
ELEVATION = 77.93' (NAVD 88, 2001 ADJUSTMENT)

ACCORDING TO THE FEDERAL EMERGENCY MANAGEMENT AGENCY'S FLOOD INSURANCE RATE MAP FOR FORT BEND COUNTY, TEXAS AND INCORPORATED AREAS, COMMUNITY PANEL NO. 48157-C-0140K EFFECTIVELY DATED APRIL 20, 2000, THIS PROPERTY LIES IN ZONE "X", AN AREA DETERMINED TO BE OUTSIDE OF THE 0.2% ANNUAL CHANCE FLOODPLAIN.

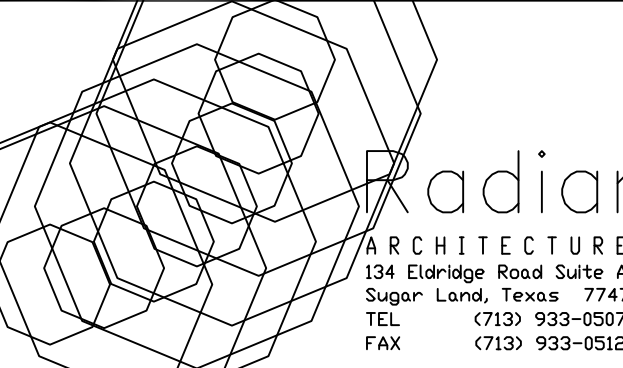


C-9 PUBLIC STORM P&P
Scale 1" = 30'
JOB NO: 130-2

SEE SHT C-0 FOR TOPOGRAPHIC SURVEY
SEE SHT C-1 FOR GRADING & DRAINAGE
SEE SHT C-2 FOR STORM SEWER LAYOUT
SEE SHT C-3 FOR DRAINAGE AREA MAP
SEE SHT C-4 FOR SANITARY & WATER LAYOUT
SEE SHT C-5 FOR PAVING JOINT LAYOUT
SEE SHT C-6 FOR SWPPP & DETAILS
SEE SHT C-7 FOR NOTES & DETAILS
SEE SHT C-8 FOR P&P OVERALL
SEE SHT C-9 FOR PUBLIC STORM P&P
SEE SHT SL-01 FOR GENERAL CONSTRUCTION NOTES I
SEE SHT SL-02 FOR GENERAL CONSTRUCTION NOTES II
SEE SHT SL-03 FOR STORM SEWER MANHOLE DETAILS
SEE SHT SL-04 FOR STORM SEWER MANHOLE DETAILS
SEE SHT SL-05 FOR STORM SEWER CONSTRUCTION NOTES
SEE SHT SL-20 FOR STORM SEWER PIPE BEDDING & BACKFILL DETAILS

TEXAS ENGINEERING AND MAPPING
12810 CENTURY DRIVE
STAFFORD, TEXAS 77477
PHONE: (281) 491-2525 FAX: (281) 491-2535

Optimum Personal Care
Assisted Living Facilities
XXX Lakeview Drive
Sugar Land, Texas 77478



#	Date	Description
1	12.10.12	SCHEMATIC DESIGN

TEXAS ENGINEERING & MAPPING CO.
REGISTRATION # F-2906
THIS DOCUMENT IS RELEASED FOR THE PURPOSE OF INTERIM REVIEW UNDER THE AUTHORITY OF CARLOS J. BARILLAS, P.E. 50474 ON 03-26-13. IT IS NOT TO BE USED FOR CONSTRUCTION PURPOSES.

Project No.120131
PUBLIC STORM P&P
Sheet No.

C-9